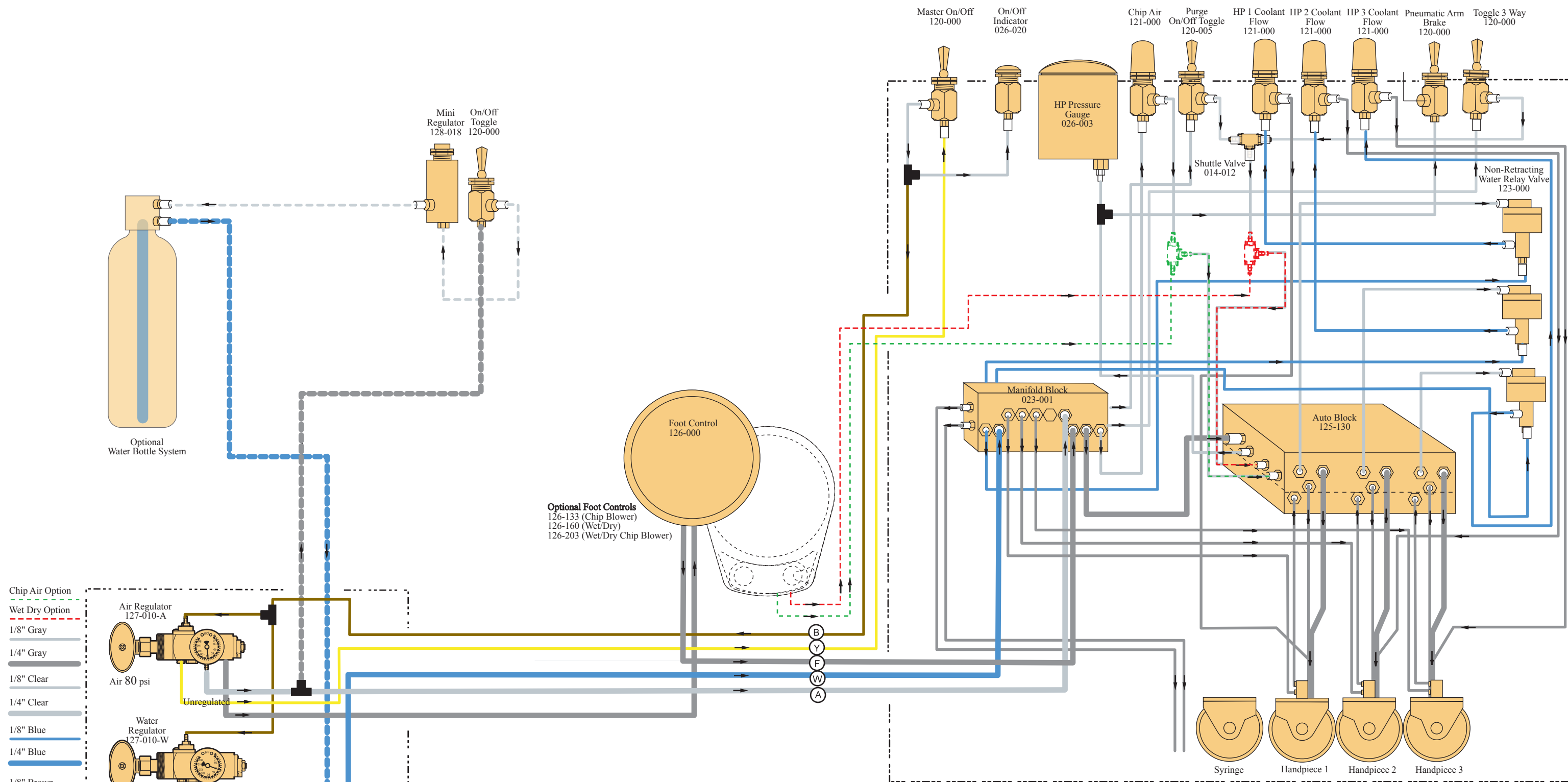


Euro 3 Handpiece Automatic control S-6300 / S-6307



Optional Foot Controls
126-133 (Chip Blower)
126-160 (Wet/Dry)
126-203 (Wet/Dry Chip Blower)

S-6300 / S-6307 Unit Head

BEAVERSTATE DENTAL, INC.
115 S. ELLIOTT RD.
NEWBERG, OR 97132 USA
800-237-2303 503-538-8756
503-538-2845 FAX
Revision Date: 4/9/09

Junction Box	
Circled letters indicate connection at Junction Box	
(A) 1/4" Clear - Constant Air In	(W) 1/4" Blue - Water In
(B) 1/8" Brown - On/Off (flow out) to M.V.	(Y) 1/8" Yellow - On/Off (flow In) from M.V.
(F) 1/4" Gray - In From Foot Control	