



# **Service Manual**

## **A-101**

### Lab HP Control

## Installation

1. Place the shipping carton in the desired location. Remove the unit from the shipping carton.
2. Separate the back from the front of the unit. Place the unit out of the way.



### NOTE

This unit requires a regulated air and water supply. Filters are highly recommended.

#### MOUNTING OPTION 1

- A. Place the back plate on the wall, level and secure it to the wall.
- B. Drill a hole for the umbilical tubing and feed the umbilical through the hole in the wall and mount the unit to the back plate.
- C. Install optional master valve assemblies, with filter and regulator, onto the manual shut-off valves. (Pressures are preset at the factory: 80 psi air, 40 psi water).
- D. Connect the supply tubings to the appropriate air and water supply lines.

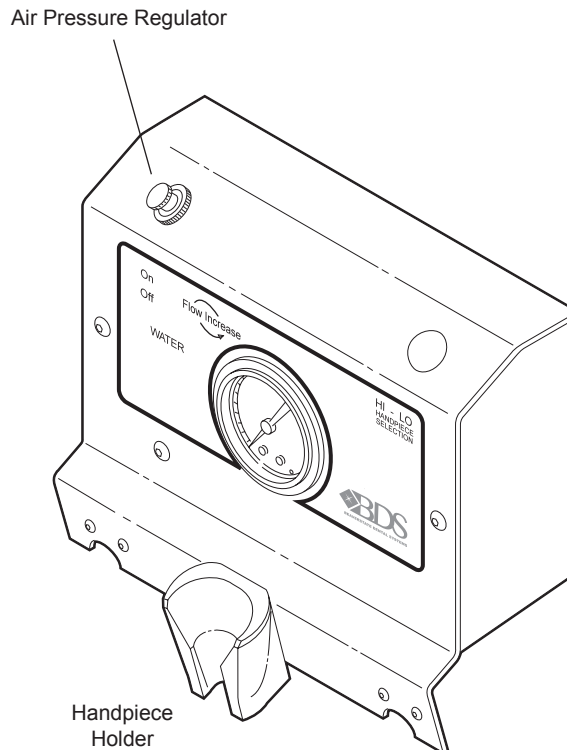
#### MOUNTING OPTION 2

- A. Place the back plate on the wall, level and secure it to the wall.
- B. Mount the unit to the back plate, letting the umbilical tubing hang down.
- C. Install optional master valve assemblies, with filter and regulator, onto the manual shut-off valves. (Pressures are preset at the factory: 80 psi air, 40 psi water).
- D. Connect the supply tubings to the appropriate air and water supply lines.

## Final Adjustments

- Check air pressure, adjust to 80 psi if necessary.
- Check water pressure, adjust to 40 psi if necessary.
- Test handpiece for proper function.
- Test syringe for proper pressure and function.

- Operation**
1. Depress the foot control to activate the handpiece. Pressure is shown on the gauge.
  2. Handpiece pressure adjustment is located on the flow control block inside the unit. Access to the flow control is from the bottom of the unit. To adjust the pressure to each handpiece:
    - a. Turn adjustment screw clockwise to decrease the handpiece pressure.
    - b. Turn adjustment screw counter-clockwise to increase the handpiece pressure.

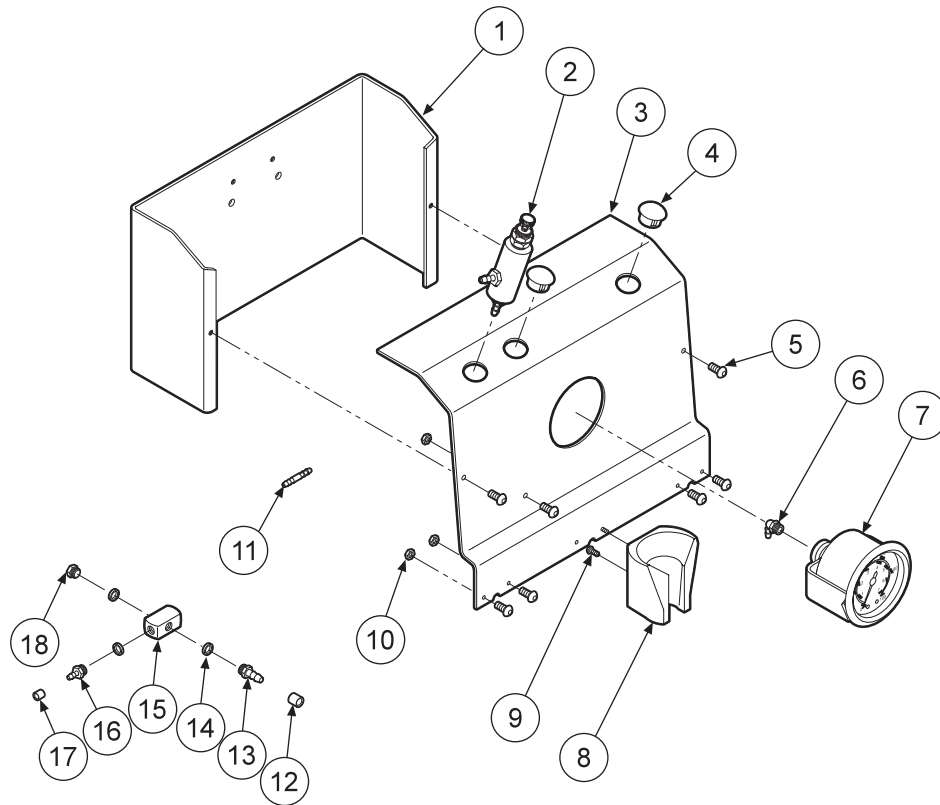


Control Panel A-101

## Troubleshooting

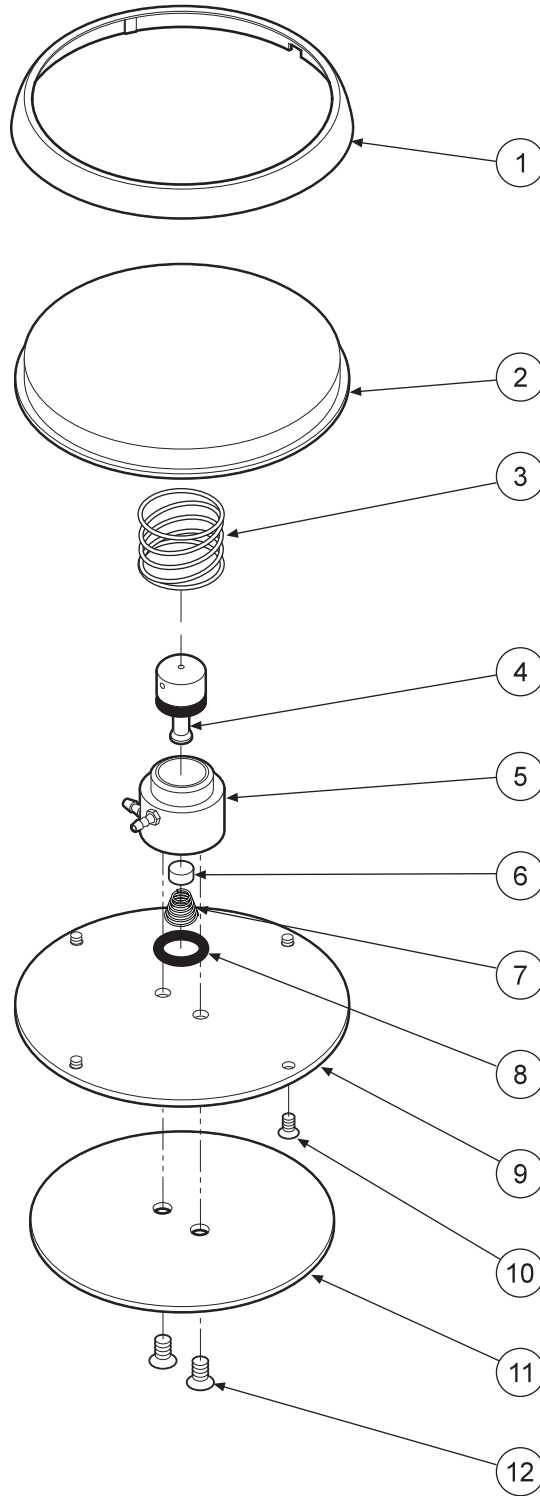
**Symptom** Handpiece lacks power.

- Possible Causes**
- A. Improper supply pressure from compressor (80 psi).
  - B. Check handpiece pressure adjustment on unit.
  - C. Air filter may be plugged.
  - D. Pinched supply tubing.
  - E. Defective handpiece gasket at connection with tubing.
  - F. Defective handpiece.



ITEM	PART DESCRIPTION	PART NUMBER	QTY	ITEM	PART DESCRIPTION	PART NUMBER	QTY	ITEM	PART DESCRIPTION	PART NUMBER	QTY
1	Chassis.....	103-200	1	7	Gauge.....	026-002	1	13	Hex Barb Fitting .....	022-010	4
2	Mini Regulator.....	128-017	1	8	Universal Handpiece Holder .....	141-006	1	14	1/4" Nylon Washer.....	003-001	6
3	Faceplate.....	103-201	1	9	Screw, 4 x 3/8".....	001-135	2	15	4-Way Cross.....	023-008	1
4	Plug, 1/2".....	010-013	2	10	Nut, 6-32 .....	002-004	1	16	Fitting, 10-32 x 1/16" Hex Barb .....	022-009	1
5	Screw, 6-32 x 1/4".....	001-133	7	11	Barb Union, 1/8".....	022-002	1	17	Ferrule, Delrin, 1/8".....	117-007	1
6	Plastic Elbow, 1/16".....	022-039	1	12	Ferrule, Delrin, 1/4".....	117-008	5	18	Plug, 10-32 .....	001-001	2

**LAB HANDPIECE CONTROL**  
**A-101**

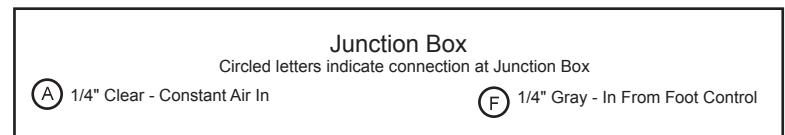
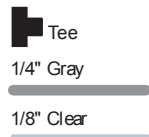
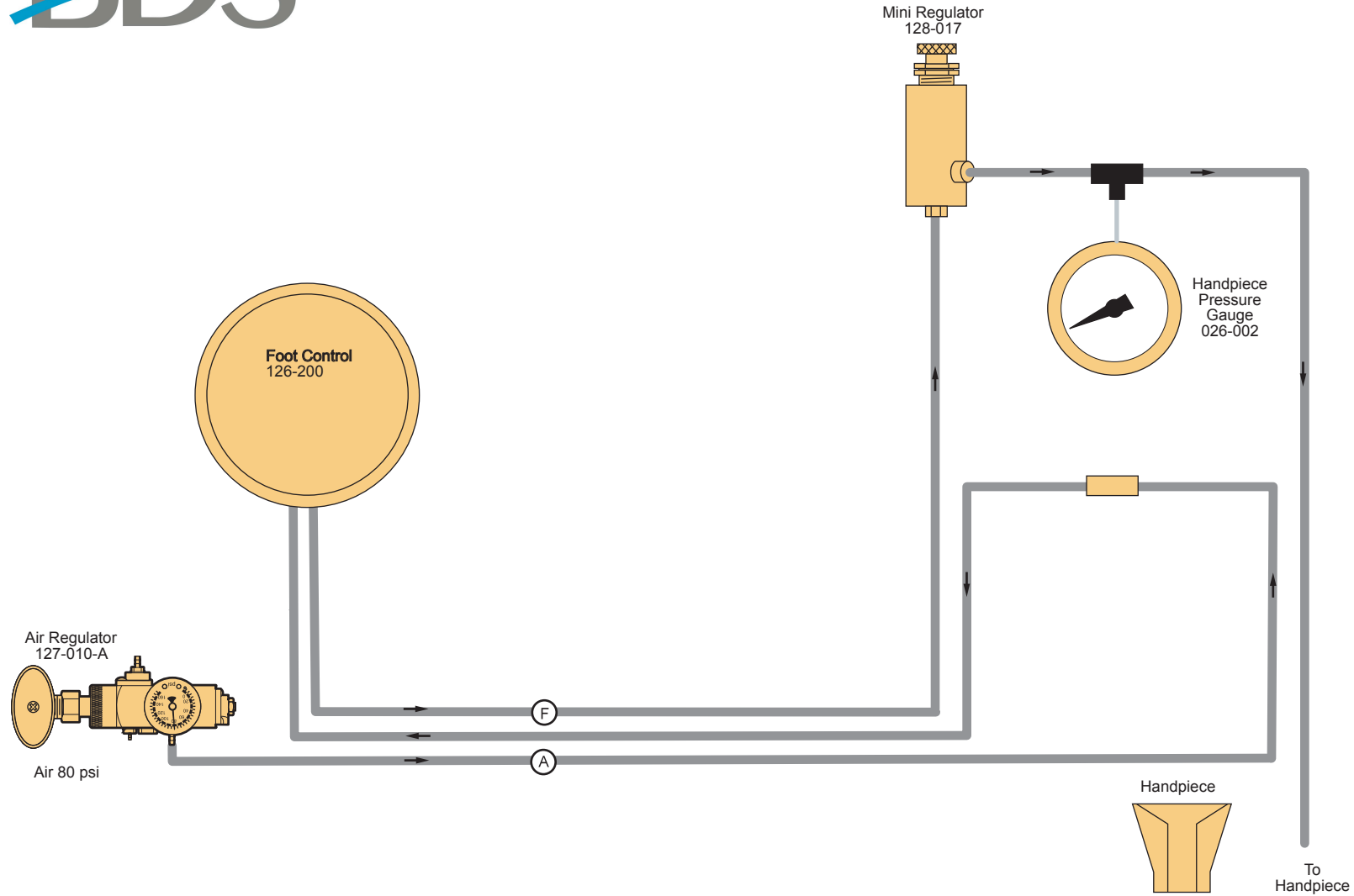


ITEM	PART DESCRIPTION	PART NUMBER	QTY
1	Ring.....	126-202	1
2	Cover.....	126-201	1
3	Spring.....	008-005	1
4	Stem (Includes 017-012 o-ring)..	126-005	1
5	Body.....	126-004	1
6	Poppet.....	126-006	1
7	Spring.....	008-006	1
8	O-Ring, 013.....	017-013	1
9	Baseplate.....	126-003	1
10	Screw, 4-40 x 1/4".....	001-005	4
11	Rubber Pad.....	126-007	1
12	Screw, 6-32 x 1/4".....	001-004	2

**FOOT CONTROL**  
126-200



# Lab Handpiece Control A-101



## WARRANTY

BDS warrants its product to be free of defects in material and workmanship for SEVEN FULL YEARS from the date of purchase on all units. Auto-blocks and standard foot controls are covered by a LIFETIME warranty when factory installed as part of a complete dental system. Upholstery has a TWO YEAR warranty and does not cover normal wear, stains, cuts or tears. Our LED lights have a FIVE year Warranty and our halogen light has a ONE year Warranty. Operatory chair motors feature a TEN year warranty. All warranty is limited to repair or replacement by BDS. Products returned to the factory and determined to be defective will be repaired or replaced free of charge at discretion of BDS. The warranty does not cover light bulbs, electrical components and trimmed or installed tubing. BDS reserves the right to void all warranties if any product is installed by other than an authorized technician. BDS' warranty does not cover damage to any surface finish, including but not limited to, discoloration or abrasion from cleaners, disinfectants or light sources. No claim for labor or consequential damages will be allowed. Return items must include a copy of the invoice or packing slip as proof of purchase.

**Beaverstate Dental Inc.  
115 S. Elliott Rd.  
Newberg, OR 97132  
800-237-2303  
503-538-8756  
503-538-2845 Fax  
[www.beaverstatedental.com](http://www.beaverstatedental.com)**

---